

Aztec Plumbing

Our quality behind your brand

PRODUCT PORTFOLIO



Aztec Plumbing

Our quality behind your brand

ABOUT US

At Aztec Plumbing, we work directly with our clients to deliver products tailored to their needs. Additionally, we have achieved a high level of integration into our value chain, promoting low-cost solutions for custom commercialized goods that form part of our value proposition.

All finished products are packaged according to our clients' specifications, allowing us to meet the strictest market requirements set by industry leaders. This results in significant benefits in terms of time savings and cost reduction for them.



QUALITY CONTROL

The quality of Aztec Plumbing products is widely recognized by our clients. **We have been manufacturing our products for over 25 years**, with an unwavering commitment to consistency. We maintain a strict system of internal testing for all raw materials, guided by a regulatory framework of quality control.



LOGISTICS OPTIMIZATION

We are strategically **located in García, Nuevo León, in northern Mexico, with fast access to the country's main highways**. Thanks to our export-oriented approach, we are only hours away from the United States border and Mexico's main maritime ports.



CUSTOMIZATION



At Aztec Plumbing, we stand out in the creation, from artistic design to product packaging and even formulating new products, all without additional investment. Our excellent reputation is based on the high quality of our products and our customer service.

SUSTAINABILITY



We know that taking care of the present is an investment in the future. That's why we work daily to improve, creating safe and environmentally respectful processes. We comply with all official regulations and invest in technology and training to ensure sustainability in all our operations.



CAPACITIES

With a vision of growth, world-class processes and products, and a strong commitment to competitiveness and the prestige of our clients, Aztec Plumbing consolidates its market leadership.

We have more than 20 brands in the U.S. and Mexican markets.



CERTIFICATIONS, AUDITS, AND AWARDS

ISO 9001-2015

We have been ISO 9001 certified since 2000, and in 2021, we obtained the ISO 9001-2015 certification, valid for three years. In 2023, we conducted a remote follow-up audit following safety protocols.



Social Responsibility Audits

We strive for continuous improvement through internal audits and external Social Responsibility audits. In 2023, we conducted the SMETA 6.1 audit, based on four pillars: Labor Standards, Health & Safety, Environment, and Business Ethics.



Ecovadis

To offer our clients a verified supply chain process, we annually undergo Ecovadis' voluntary evaluation. This allows us to integrate continuous improvements into our compliance processes and generate exceptional value for our clients.





WELDING PASTE

Aztec Plumbing's welding paste is formulated with high-quality petroleum jelly, allowing for a better connection in copper pipes and savings in solder. This lead-free paste is less corrosive to the touch and doesn't splatter during welding.



PLUMBING PUTTY

- Maintains flexibility.
- Water and gas resistant.
- Doesn't harden, crack, or crumble.



CUTTING OIL

Formulated with selected chlorinated and sulfurized additives to lubricate and reduce friction during the threading process, maintaining stable temperature.



PIPE JOINT COMPOUND

Forms a PTFE film on all types of pipe joints, ensuring greater durability and leak protection.



WAX RINGS

Made with a special blend of petroleum waxes to create a perfect seal between the toilet and the floor drain.



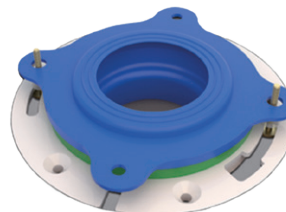
LEAK DETECTOR

Formulated product to detect gas leaks in pipes, valves, tanks, cylinders, and more.



PVC CEMENTS

Adhesive used in plumbing and pipe applications. Composed of a blend of solvents and resins that dissolve for strong and waterproof plastic pipe joints.



WAXLESS TOILET SEAL

An innovative product that guarantees a hermetic seal, whether the flange is above, level with, or below the floor.

Know the
installation
details
 YouTube



US Patent No. 11180911



Aztec Plumbing

Our quality behind your brand

We maintain a firm commitment to our clients' competitiveness through four fundamental pillars:

- ✓ High-quality products
- ✓ Reliable supply
- ✓ Product innovation and development
- ✓ Excellent service

At Aztec Plumbing, we continue to innovate to remain the top choice in quality, service, and competitiveness, ensuring the success of our clients.



Grifen

EASY TO INSTALL

Grifen was created to offer designs in Mexico that are easy and practical to install, allowing anyone to make home improvements.

The powerful flow from our faucets through their various functions ensures efficient cleaning and rinsing every day, without wasting water while maximizing your time.

LINE OF SINGLE-LEVER KITCHEN FAUCETS

FUNCTIONALITY AND LUXURY

You can choose between different finishes that Grifen offers, combining functionality with luxury designs.

Our designs offer versatility for a wide variety of decor styles.

DURABILITY

The life of our single-lever faucets is over 500,000 cycles. With just one visit, you'll appreciate the exceptional quality and finish of each of our designs.



ACQUA

- 360° rotating design
- Handle and body: Zinc
- ABS aerator: Triple functionality
- Finish: Brushed nickel
- Cartridge: Ceramic
- Height: 46 cm
- Hoses: Pre-assembled nylon-reinforced
- Single-lever: 90° rotation angle for hot and cold water operation
- GPM: 1.8 gallons/min (6.8 liters/min) max



ZACIL

- 360° rotating design
- Handle: Stainless steel
- ABS aerator: Double functionality
- Finish: Brushed nickel
- Cartridge: Ceramic
- Height: 46 cm
- Hoses: Pre-assembled nylon-reinforced
- Single-lever: 90° rotation angle for hot and cold water operation
- GPM: 2.2 gallons/min (8.3 liters/min) max



NIZA

- 360° rotating design
- Handle and body: Zinc
- ABS aerator: Double functionality
- Finish: Brushed nickel
- Cartridge: Ceramic
- Height: 47 cm
- Hoses: Pre-assembled nylon-reinforced
- Single-lever: 90° rotation angle for hot and cold water operation
- GPM: 2.2 gallons/min (8.3 liters/min) max



MIZU

- 360° rotating design
- Handle: Zinc Body: Stainless steel
- ABS aerator: Double functionality
- Finish: Brushed nickel
- Cartridge: Ceramic
- Height: 44 cm
- Hoses: Pre-assembled nylon-reinforced
- Single-lever: 90° rotation angle for hot and cold water operation
- GPM: 2.2 gallons/min (8.3 liters/min) max

Grifen

**Discover the harmony
of style, functionality,
and water care with
Grifen.**

Get to know Grifen, a 100% Mexican brand created to inspire improvements in the style of your kitchen and in water usage. Our kitchen faucet finishes perfectly complement your style; choose the one you like the most and enjoy the Grifen experience.



5-year warranty



Easy maintenance



Easy to install



Functionality and luxury



**Contributes to water
savings**

SINGLE-LEVER KITCHEN FAUCET

- 360° rotating design
- Pull-out sprayer
- Two spray options
- Quick connection





Available can sizes: 118 ml (04 oz), 237 ml (08 oz), 473 ml (16 oz), 946 ml (32 oz) y 5000 ml (1,32 gal)



317 PVC

STRONG WELD 317 is a transparent or gray heavy-bodied PVC cement with medium curing time and high strength for all pipe classes and schedules, including schedule 80, with an interference fit of up to 12 inches (315 mm) in diameter.



302 PVC / Sanitario

STRONG WELD 302 is a transparent PVC solvent cement with a regular body, fast curing, and high resistance for all pipe classes and schedules except schedule 80. It is used for pipes and fittings with an interference fit of up to 4 inches (110 mm) in diameter.



325 PVC / Hidráulico

STRONG WELD 325 is a blue-colored PVC cement with a medium body, extremely fast curing, resistant for all pipe classes and schedules, with an interference fit of up to 6 inches (160 mm) in diameter. Schedule 80 and 4 inches (110 mm) in diameter.



378 ABS

STRONG WELD 378 is a black ABS solvent cement with a medium body, fast curing, and high strength for all pipe classes and schedules with an interference fit of up to 8 inches (200 mm) in diameter.



C-70 CLEANER

STRONG WELD C-70 is a diluted solvent cleaner, water-based, and low VOC. It is specifically formulated to remove grease, oil, and grime from the joint surfaces of PVC, CPVC, ABS, and styrene pipe fittings.



P-48 PRIMER

STRONG WELD P-48 PRIMER, with low VOC emission, is a bodyless, fast-acting primer. P-48 PRIMER softens and dissolves the surfaces of PVC and CPVC pipes and fittings for a permanent bond. Available in transparent and purple, the latter allows easy identification of application on the joint surfaces.



GOLD CPVC

STRONG WELD GOLD is a yellow-colored CPVC cement with a medium body, fast curing, and high resistance for copper-sized CPVC pipes with an interference fit of up to 2 inches (63 mm) in diameter.





**Long
lasting**



**Greater
coverage**



PW/DWV/SW

Solvent cement is a type of adhesive commonly used in plumbing and piping applications. It is composed of a mixture of solvents and resins that dissolve to join plastic pipes and fittings, forming a strong and waterproof bond.

It is ideal for use with PVC, CPVC, and ABS pipes and fittings, offering an efficient and cost-effective alternative to welding or other types of adhesives. It softens the surfaces of the pipes and fittings, allowing the resin to penetrate and form a permanent bond once the solvent evaporates.

It is widely used in various industries, such as construction, plumbing, and engineering, and is known for its durability, ease of use, and fast-drying properties.





HP STRONG SEAL GOLD 3600

A premium general-purpose acetic silicone sealant for sealing and glazing applications, with acetic curing and anti-fungal resistance.

Application: Sealing and bonding Glass, Aluminum, Steel, Window Panels, UPVC, Wood, Granite, Concrete, Tiles, etc. Ideal for applications in Automobiles, Boats, and Industries.

Net content: 280 ml



HP STRONG SEAL SILVER 3400

An economical acetic silicone sealant for general-purpose applications, anti-fungal, for sealing and glazing applications.

Application: Sealing and bonding Glass, Aluminum, Steel, Window Panels, Sanitary Applications, Concrete, Tiles, etc.

Net content: 260 ml



HP STRONG SEAL FAST 3700

A premium general-purpose silicone sealant with acetic curing and anti-fungal resistance for sealing and glazing applications.

Application: Sealing and bonding Glass, Aluminum, Steel, Window Panels, UPVC, Wood, Granite, Concrete, Tiles, etc.

Net content: 280 ml



HP STRONG SEAL KITCHEN AND BATH

A high-performance, fast-curing, acetic silicone sealant, anti-fungal, for specialized commercial applications, with long-lasting silicone rubber that does not deteriorate with exposure to chemicals.

Application: Glass, Ceramic, Fiber, Non-oily Wood, Painted Surfaces, and Aluminum.

Net content: 280 ml



HP STRONG SEAL NEUTRAL 7400

It is a neutral-cure silicone sealant for general use, anti-fungal, for general sealing and glazing applications.

Application: Sealing and bonding of Glass, Aluminum, Steel, Window Panels, Painted and Coated Surfaces, Mirror Bonds, Sanitary Applications, Wood, Concrete, Tiles, Waterproofing, etc.

Net content: 280 ml



HP STRONG SEAL HR 7500

A neutral-curing silicone sealant, one-component, red-colored, that cures into a solid rubber resistant to humidity exposure in the air.

Application: Sealing terminals of heating elements, oven doors, gaskets, incubators, sterilization, and tank sealing.

Net content: 280 ml



HP STRONG SEAL SEALANT ACRYLIC CAULK

It is a mold-resistant acrylic sealant, rust inhibitor, and paintable. Formulated for joints with low or no movement, it efficiently seals joints between construction parts under moderate stress.

Application: Sealing around window frames and aluminum or UPVC doors, sealing around ventilation, molding, and corner joints.

Net content: 280 ml



STRONGTM SEAL



Silicone sealants are a type of adhesive commonly used in construction, automotive, and home applications.

They are known for their excellent performance:

-  Resist high temperatures and weather conditions
-  Provide a flexible and durable seal
-  Do not shrink or crack
-  Do not yellow over time

Silicone sealants are also waterproof, making them ideal for use in bathrooms, kitchens, and other damp areas. They are generally supplied as a paste that can be easily applied with a standard caulking gun and can be painted once cured.



INDOOR AND
OUTDOOR



LONG-LASTING



ANTI-FUNGAL

SUSTAINABILITY

At Aztec Plumbing, we have decided to make sustainability a central focus in transforming our business, focusing our efforts on contributing to the solution of global challenges. Our objective is to create shared value for all our stakeholders through the sustainable use of biodiversity and the sustainable development of communities, resulting in quality products that meet the challenges and objectives of our clients.

Check out our Annual Sustainability Report



Visit our extensive portfolio for the plumbing industry.

info@aztec-plumbing.com

www.aztec-plumbing.com
www.corzengroup.com

Connect with us



This catalogue is intended as a guide for the user only. The information provided is based on typical values, obtained from the best of our knowledge and tests carried out internally.

However, it is the user's responsibility to test and approve each product for its intended use. Aztec Plumbing guarantees that each product is manufactured in accordance with the specifications defined in the technical data sheet in force at the date of production.

We are Aztec Plumbing. We are part of Corzen Group.



 **Aztec Plumbing**